

Outline

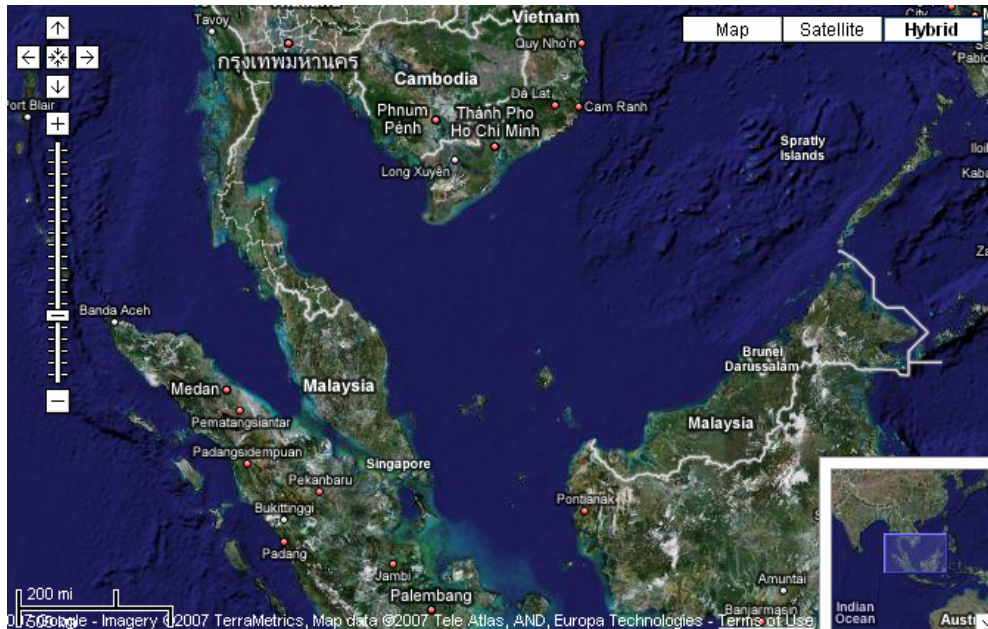


- Introduction
- Background
- Current Status
- Challenges
- Future plans

Introduction

- Malaysia is fortunate to have large areas of forest being gazetted as permanent reserve.
- Include permanent forest estate, state and national park and wildlife sanctuaries.
- Due to its high biological diversity, Malaysia had also been identified as one of the twelve mega-diverse countries in the world.

Map of Malaysia



Climate-humid 70-98 %

Warm 22-32 °C

Seasonal heavy rain

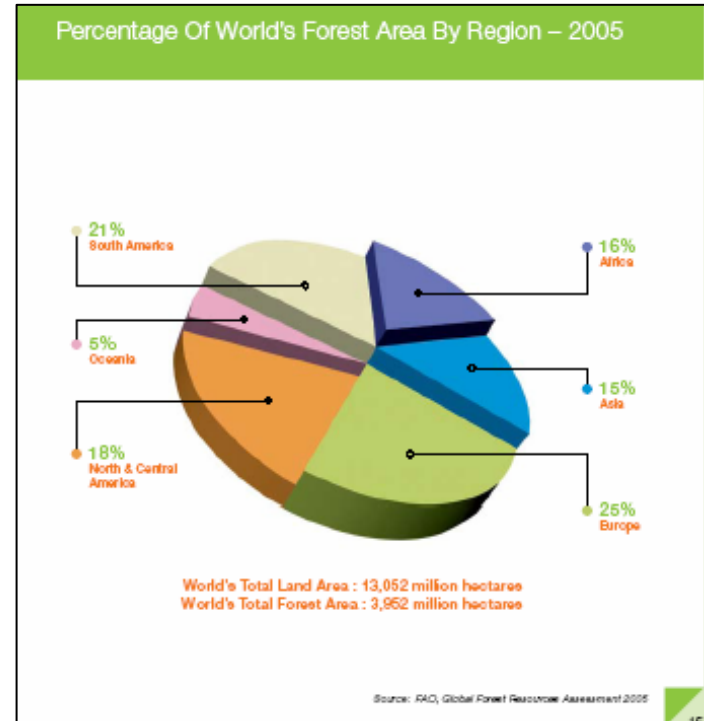
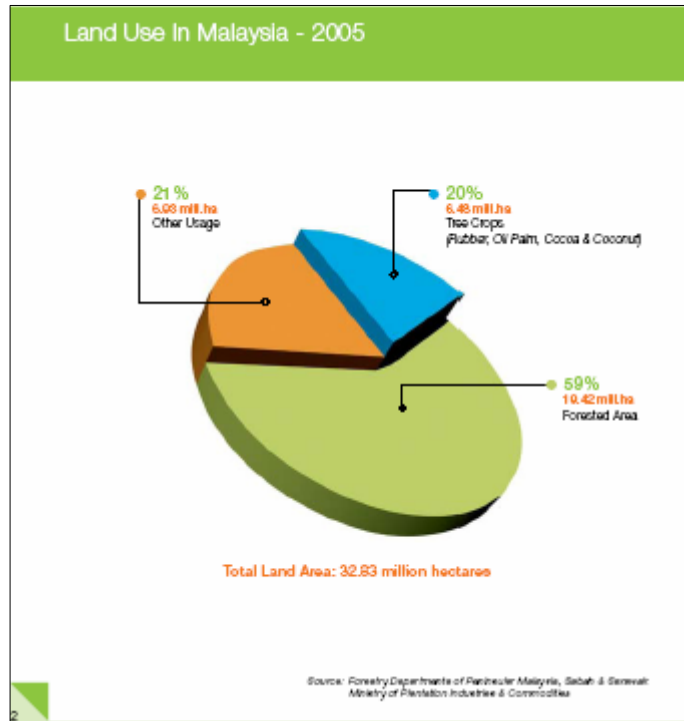
North East monsoon

Rainfall 2500 mm

Land area 33 million ha

59 % natural forest

Land Use in Malaysia



Malaysia has 59 % of permanent reserve forest,
and 78 % if including all tree cover (blue + green)

Forest Cover Map of Malaysia

Forest Cover In Peninsular Malaysia – 2005



10

Forest Cover In Sabah & Sarawak – 2005



11

Permanent Reserved Forest



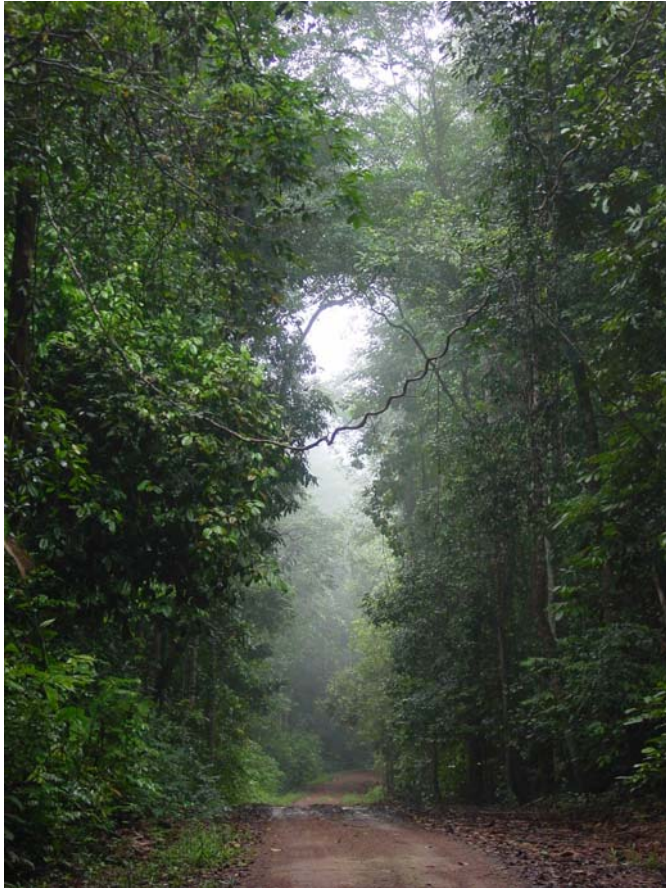
Note: * The increase is through redesignation of part of the Conversion Forest

Historical Background



- Long-term research begin in 1940's
- Establishment of:
 - 2 ha plots in Bukit Lagong (1949) and Sungei Menyala (1947)
 - Several 2 ha plots in Pasoh (1970's)
 - 50 ha demography plot in Pasoh (1985)
- Collaborative research with local and international agencies since 1970's
 - International Biosphere Program in 1970's
 - Center for Tropical Forest Science in 1985
 - National Institute of Environmental Science, Japan in 1991

Malaysia LTER Sites - Status

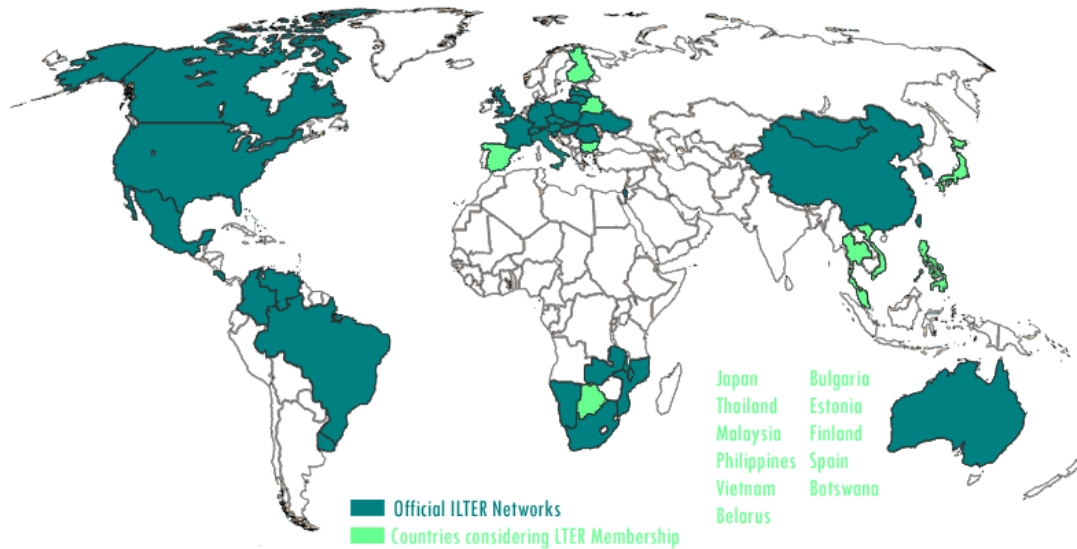


- Extended member of the EAP-LTER and not an official member of ILTER network yet. ▶
- No official LTER sites
- Country Report mainly on research activities involving FRIM research sites
 - Pasoh (multidisciplinary research)
 - Semangkok (Demographic studies in logged and primary forest)
 - Bukit Lagong and Sg Menyala (Demographic studies in primary forest)



International LTER Network

The International Long Term Ecological Research Network



East Asia-Pacific Region	Central/Eastern European Region	Western European Region	African Region	North American Region	Central/South American Region
<ul style="list-style-type: none"> ▶ Australia LTER Network ▶ CERN ▶ Mongolia LTER Network ▶ South Korea LTER Network ▶ TERN 	<ul style="list-style-type: none"> ▶ CZ LTER Network ▶ Hungary LTER Network ▶ Israel DEN ▶ Latvia LTER Network ▶ Lithuania LTER Network ▶ Poland LTER Network ▶ Romania LTER Network ▶ Slovakia LTER Network ▶ Slovenia LTER Network ▶ Ukraine LTER Network 	<ul style="list-style-type: none"> ▶ Austria LTER Network ▶ France LTER Network ▶ Italian LTER Network ▶ LTER-D Network ▶ Swiss LWF Network ▶ UKECN 	<ul style="list-style-type: none"> ▶ Malawi LTER Network ▶ Mozambique LTER Network ▶ Namibia LTER Network ▶ SAEON ▶ Zambia LTER Network 	<ul style="list-style-type: none"> ▶ Canada EMAN ▶ Mex LTER Network ▶ US LTER Network 	<ul style="list-style-type: none"> ▶ Brazil LTER Network ▶ Colombia LTER Network ▶ Costa Rica LTER Network ▶ Uruguay LTER Network ▶ Venezuela LTER Network

Note that Thailand, Philippines, Japan and Finland had been accepted as official members of the ILTER network in August 2007



Pasoh Research Forest



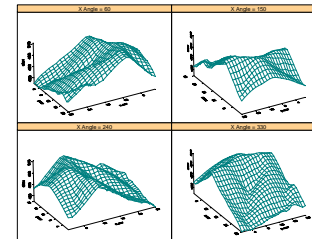
- Active LTER site in Malaysia
- Area covers 1500 ha
- Current research include genetic, forest ecosystem, biomass assessment, demographic study, hydrology, soil-plant association etc.

Semangkok Research Forest



Seraya Ridge Forest

- Located In a Virgin Jungle Reserve
- 6 ha & 4 ha plots in primary & logged forest
- Established since 1993
- Research activities include:
 - Demographic study, genetics in primary forest and regeneration in logged forest



Status



- LTER site currently established and monitored by various institutions
- Need to get connected through network
- A platform for exchange and sharing of information and experiences
- Development of long-term ecological research to further support ecological understanding and improved management of forest ecosystems.

Current Effort



- Organize training course run by FRIM ICT with APAFRI on IMS
- Developing database system for LTER sites
- Attending meetings at Regional and International LTER meetings
- Organized National LTER Workshop

Future Plans



- Identify LTER sites in Malaysia
- Develop IMS for LTER sites
- Organize meetings among research scientist and managers directly involved or interested in LTER network
- To secure funding for the LTER network
- To be an official member of ILTER

Thank you for your attention

